

# Waste Sorting at a Glance



**ELW**

Entsorgungsbetriebe der  
Landeshauptstadt Wiesbaden

# The quick and easy way to sort your waste

---

---

As a municipal disposal organisation we are responsible for the collection and proper disposal of the refuse that accumulates day for day in your household. An exception to this is lightweight packaging, which is collected and disposed off on a wholly private basis via the DSD GmbH.

To enable you to sort your waste quickly and easily we have provided different bins for the separate collection at your residence. Moreover, you can make use of four civic amenity sites, a bulky refuse collection service and a harmful substances collection service.

Wiesbaden refuse charges are low!

Thanks to our efficient method of operating and ongoing improvements we introduce in the work processes we are able to offer in comparison the lowest refuse charges in the whole of Germany. The refuse charges are based on the extent and the emptying cycle of the refuse containers. Both the emptying of recyclable refuse containers (waste paper and biodegradable waste) is covered by the charge. Also, the utilisation of additional services such as the bulky refuse collection service or the civic amenity centres is free of charge for private households.

Recycling refuse helps us to husband resources. Let's protect the environment together. Make use of what we have to offer to help you sort your refuse.

The following pages give you important information on the proper way of disposing of the various types of refuse.

An overview of all refuse disposal dates can be found on the internet: [www.wiesbaden.de/elw-abfallkalender](http://www.wiesbaden.de/elw-abfallkalender). Enter your street and house number to generate a clearly laid out calendar giving the disposal dates for your address.

For more information please contact the staff at our ELW Service Centres on the telephone number 0611 319700 or on the internet: [www.wiesbaden.de/elw](http://www.wiesbaden.de/elw).



# Scrap Glass



Bottles and jars are collected via the bottle banks and sorted according to the colours white, green and brown. Bottles and jars in other colours (red, blue, lilac, yellow) belong in the green glass bottle bank. Please remove caps and tops from the bottles and jars.



**Yes,**

this belongs in the bottle bank

- Non-returnable bottles
- Jam and preservative jars
- Pickling jars
- Broken drinking glasses



**No,**

this does not belong in the bottle bank

- Bottle tops, metal lids  
→ Lightweight packaging
- Window, car and mirror glass  
→ Non-recyclable waste
- Wired glass from toughened glass panes  
→ Non-recyclable waste
- Porcelain, ceramics, stoneware and clayware  
→ Non-recyclable waste
- Lead and crystal glass  
→ Non-recyclable waste
- Light bulbs  
→ Non-recyclable waste
- Screen glass from televisions and computer monitors  
→ Non-recyclable waste
- Fluorescent tubes, energy-saving lights  
→ Special waste

The locations of all bottle banks can be found in the internet: [www.wiesbaden.de/elw-glascontainer](http://www.wiesbaden.de/elw-glascontainer).

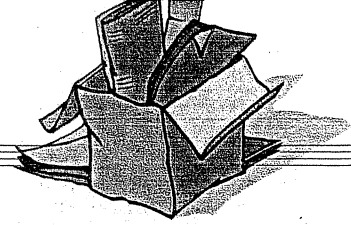
## Info

The collected scrap glass is sorted according to colour and transported to the recycling plant.

To manufacture white container glass, a colour purity of 99.7 % is required from the scrap glass employed. The percentage of other coloured glass in brown glass must not exceed the 8 % mark. Only green glass allows a percentage of other coloured glass of up to 15 %. This is why glass of different colours can be deposited in the green glass bottle bank.

Glass components, ceramics, wired glass or plate glass, such as window screens for example, do not belong in the bottle banks; they would make the contents unusable for recycling.

# Waste Paper



The waste paper containers are for collecting paper and paperboard. Staples can be left in magazines and brochures, but the attached CDs or cosmetic products are to be removed. This also applies to large quantities of adhesive tape (for example on boxes).



**Yes,**  
this belongs in the waste paper containers

- Newspapers and magazines
- Catalogues, leaflets and brochures
- Exercise books and books
- Envelopes (also with window)
- Writing, copying and computer paper
- Paperboard, cardboard, paper packaging



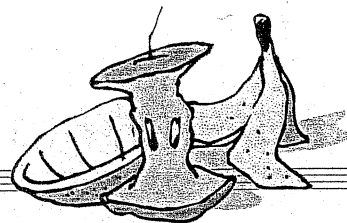
**No,**  
this does not belong in the waste paper containers

- Heavily soiled paper  
→ Non-recyclable waste
- Wallpaper  
→ Non-recyclable waste
- Baking, transparent and carbon paper  
→ Non-recyclable waste
- Hygienic paper and cellulose cloths  
(for example paper tissues)  
→ Non-recyclable waste
- Thermal paper (from the fax)  
→ Non-recyclable waste
- Photographs and photographic paper  
→ Non-recyclable waste
- Composite packaging, such as, for example,  
milk and drinks cartons  
→ Lightweight packaging

## Info

Waste paper is used to manufacture recycled paper (for example, packaging or newspapers). The sale of waste paper serves solely to stabilise the refuse charge. The more waste paper that can be collected separately therefore, the more revenue the ELW can currently generate from it.

# Bio Waste



The bio bin is solely for compostable waste from the kitchen and garden. Up to 40 % of household refuse is bio waste. The bio waste is turned into compost in large-scale composting plants and can be used as fertiliser in the garden or on farms. Thanks to composting, 100 % of bio waste can be recycled in the material cycle.

Green waste paper sacks can also be used for leaves and grass cuttings. These can be purchased at the ELW gate, the civic amenity centres, all local administrative offices or at the eco shop in the centre of town (Luisenstraße 19). Please put the sacks out ready for collection by the side of the road on the day the bio waste is due for collection in your street.

The civic amenity centres (up to 700 litres) or the ELW container service are available for larger quantities of greenery waste.

Bundles of tree or shrubs cuttings can also be collected by the ELW bulky refuse collection service. This service is free of charge for private households four times a year for up to five cubic metres for each collection. Branches of a maximum 12 cm diameter and 1.50 m in length must be tied with cord in handy sized bundles of a maximum one metre in diameter.



**Yes,**

this belongs in the bio bin

- Fruit and vegetable scraps
- Egg shells
- Coffee grounds with filter, tea bags
- Leftovers of meals and food
- Shrivelled cut flowers and potted plants
- Bones, feathers, hair
- Leaves and twigs, grass, tree and hedge trimmings
- Sawdust and wood chippings (from untreated wood)



**No,**

this does not belong in the bio bin

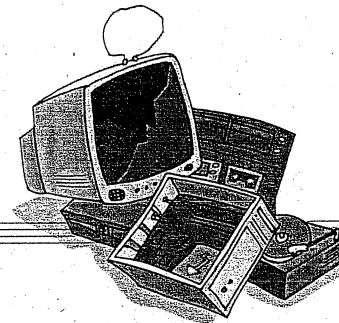
- Vacuum cleaner bag with contents  
→ Non-recyclable waste
- Stones, nappies, cigarette ends, animal litter, animal excrement  
→ Non-recyclable waste
- Charcoal, sweepings, ash  
→ Non-recyclable waste
- Untreated wood  
→ Civic amenity centres, acceptance of small amounts at disposal site
- Treated wood  
→ Small quantity acceptance point at disposal site

## TIPS

- All damp refuse, such as kitchen waste and leftovers of meals should either be wrapped in newspaper or placed in a paper bag. The paper absorbs the moisture, prevents unpleasant odours and keeps the bio bin clean
- Do not leave the bio bin in direct sunlight.
- Aerate the interior with cuttings from the garden.
- Cover the base of the bio bin with rolled up newspaper or roughly hewn branches.
- Should maggots appear in summer, open the lid and put the bio bin briefly in the sun; this will dry up the maggots. Alternatively, sprinkle the inside with stone dust, algae or quick lime (available from the garden centre). Please do not use bleaching powder.
- In winter the sufficient use of newspaper prevents the (damp) bio waste from freezing solid in the container.



# Electrical and Electronic Equipment



Electrical and electronic equipment must not be disposed off via the non-recyclable waste bin. Not only do the appliances contain valuable raw materials, such as copper or sheet steel, but also environmentally harmful substances such as lead or cadmium. All electrical equipment can be handed in free of charge at the civic amenity centres and the small quantity acceptance point at the disposal site. For large and bulky electrical and electronic equipment, please use the bulky refuse collection service.



**Yes,**

**this belongs in the electrical collection containers**

- Telephones, mobile phones, answering machines, radios, car radios, MP3 players, pocket calculators
- Hair dryers, toasters, coffee machines, irons, deep fat fryers, mixers, egg boilers, water boilers, fans, razors, electric toothbrushes, clocks, cameras
- Electrical or electronic tools, such as, for example, drills, saws, cutters, sanders, pumps, sewing machines
- Medical devices, such as, for example, pulse readers, blood pressure measuring devices, electrical thermometers
- Electrical or electronic toys, such as, for example, railways, gameboys or remote-controlled vehicles
- Domestic appliances: fridges and deep freezers, washing and dishwasher machines, tumble driers, kitchen stove and ovens, microwave ovens
- Large information and entertainment devices: television, computer, monitors, fax machines, printers, HiFi systems, video recorders

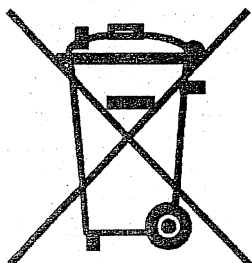


**No,**

**this does not belong in the electrical collection containers**

- Fluorescent tubes, energy-saving lights  
→ Special waste
- Infectious products  
→ Non-recyclable waste (in sealed containers)

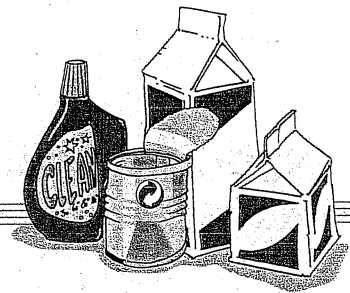
## Info



Since March 2006 the manufacturers of electrical and electronic equipment have been responsible for the environmentally compatible recycling of old devices. The foundation Elektro-Altgeräte-Register (EAR) [electrical old device register] was founded for the purpose.

All electrical devices that have come onto the market since March 2006 bear the symbol depicted on the left displaying a crossed-out waste container.

# Lightweight Packaging



The containers for lightweight packaging and the yellow sacks are used to collect packaging waste. The packaging need not be rinsed out. It is sufficient to empty them completely. The recycling of the collected packaging, which consists of valuable materials, helps to husband natural raw material sources.



**Yes,**

**this belongs in the lightweight packaging containers**

- Plastic packaging: plastic bottles (non-returnable), beakers, carrier bags, bags, foil
- Metal packaging (non-returnable): preserved food and drink tins, metal lids, bottle tops, aluminium
- Composite packaging: milk and drinks cartons, vacuum packaging
- Polystyrene packaging



**No,**

**this does not belong in the lightweight packaging containers**

- Glass packaging (with or without green dot)  
→ Scrap glass
- Paper and cardboard packaging (with or without green dot)  
→ Waste paper
- Broken domestic objects and children's toys made of plastic  
→ Non-recyclable waste
- Soiled polystyrene, polystyrene tiles (building material)  
→ Non-recyclable waste or container service
- Spray cans with PU foam  
→ Special waste

## Yellow sack issuing points:

- All civic amenity centres
- ELW gate (Unterer Zwerchweg 120)
- eco shop (Luisenstraße 19)
- ESWE Versorgung/Pforte (Weidenbornstraße 1)
- Cash desk at the health authority office (3rd floor, Room 315, Dotzheimer Str. 38/40)
- All local administrative offices



## Info

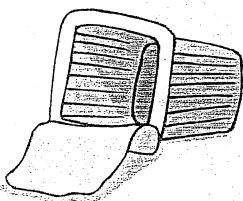
### Disposal of lightweight packaging by private companies

The disposal of lightweight packaging is organised on a private basis via the Duales System Deutschland GmbH (DSD GmbH).

It is not financed through the refuse collection charge, but by the purchase of products with the "Green Dot". An invitation to tender for the collection and recycling of the lightweight packaging is issued and awarded every three years by the DSD GmbH.

At the moment, a private disposal company in Wiesbaden is charged by the DSD GmbH with the collection of lightweight packaging throughout the entire municipal district. Should you have any questions concerning lightweight packaging collection, please contact the company directly.

The current contact details can be found in the ELW waste calendar in the internet: [www.wiesbaden.de/elw-abfallkalender](http://www.wiesbaden.de/elw-abfallkalender).



# Non-recyclable Waste



The non-recyclable waste bins are for all refuse which cannot be recycled. In this sense only 15 – 20 % of domestic refuse is really non-recyclable waste. Should the volume of the bins occasionally be insufficient, you can obtain additional non-recyclable waste sacks for a fee of 2.50 euros and place them next to the bin for collection. The refuse sacks can be obtained from the ELW gate, the civic amenity centres, all local administrative offices or at the eco shop in the centre of town (Luisenstraße 19). Further sales points can also be found on the internet: [www.wiesbaden.de/elw](http://www.wiesbaden.de/elw) → Dienstleistungen → Säcke für Restabfall.



**Yes,**

**this belongs in the non-recyclable waste bins**

- Vacuum cleaner bag, ash, sweepings, cat and animal litter, animal excrement
- Soiled paper, removed wallpaper
- Cigar and cigarette ends and ash
- Hygienic waste such as nappies and sanitary towels
- Video and audio cassettes
- Defective domestic waste such as crystal glasses, crockery, buckets, clay pots
- Light bulbs
- File covers
- Defective toys



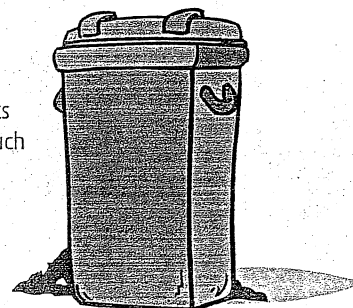
**No,**

**this does not belong in the non-recyclable waste bin**

- Bottles and glass containers  
→ Scrap glass
- Paper and cardboard  
→ Waste paper
- Packaging  
→ Lightweight packaging
- Compostable waste  
→ Bio waste
- Chemicals, paints, solvents, energy-saving lights  
→ Special waste
- Batteries  
→ Return to dealer
- Electrical and electronic equipment  
→ Civic amenity centres and small quantity acceptance point at disposal site
- CDs and DVDs  
→ Civic amenity centres and small quantity acceptance point at disposal site
- Building rubble  
→ Civic amenity centres, small quantity acceptance point at disposal site or container service

## Info

The non-recyclable waste collected in Wiesbaden is reloaded onto large trucks at the waste transit plant on the site of the city disposal site in Dyckerhoffbruch and then transported for thermal recycling to the waste incineration plants.





# Special Waste



Special waste is composed of dangerous and/or toxic materials which must undergo special disposal. Private households can hand in special waste at the special waste small quantity acceptance point at the disposal site free of charge or at the hazardous material mobile collector, which visits all parts of the city twice a year. Commercial and service companies pay a charge for handing in special waste, the amount charged depending on the quantity handed over. A current price list can be found on the internet.

Per delivery no more than 100 kg and in total no more than 500 kg can be handed in annually. Please hand in your special waste in sealed containers (up to 30 litre capacity).



**Yes,**  
this is special waste

- Liquid pigments, paints, dispersion paints
- Wood protectors, insecticides and weed killers
- cleaners of all kinds (WC cleaner, body care products, car care products)
- Dry batteries, accumulators, car batteries (non-returnable)
- Fluorescent tubes, energy-saving lamps, mercury vapour discharge lights
- Small capacitors from lighting systems and electrical appliances
- Spray cans of all kinds with residual (paint, cleaner, PU foam)
- Solvents of all kinds (thinner, brush cleaner, stain remover)
- Adhesive, filler and sealant
- Acids and base solutions (battery acid, hydrochloric acid, ammonia solutions)
- Liquid and solid chemicals (mercury, laboratory and photographic chemicals)
- Oil-containing cloths and oil filters
- Mineral, plant or synthetic oils, greases and waxes
- Halon fire extinguisher



**No,**  
this is not special waste

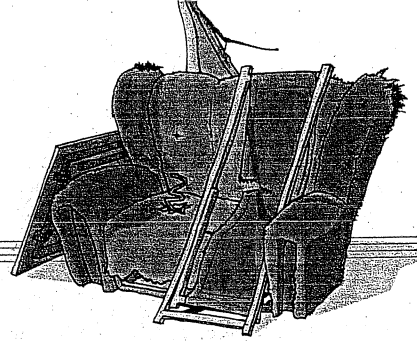
- Waste oil  
→ Return to dealer
- Hardened paint, adhesive and pigments  
→ Non-recyclable waste
- Car batteries (with deposit)  
→ Return to dealer
- Fire extinguishers (apart from the halon extinguisher)  
→ Return to dealer
- Pressurised vessels  
→ Return to dealer
- Munitions, explosives and combat gases  
→ Explosive ordinance disposal authorities
- Radioactive waste  
→ industrial inspectorate

## Info

The dates on which the harmful substance mobile collector will be in your neighbourhood can be found in the internet waste calendar: [www.wiesbaden.de/elw-abfallkalender](http://www.wiesbaden.de/elw-abfallkalender). Products which constitute special waste upon disposal can be recognised by the square orange-coloured danger symbol or by the warnings such as „flammable“, „irritant for the eyes“, health hazard if inhaled“.

The special waste from Wiesbaden is disposed in a proper and environmentally friendly manner by the HIM GmbH.

# Bulky Refuse



Bulky refuse includes all bulky furniture and domestic devices, which on account of their size or weight do not fit in the normal non-recyclable waste bins. Please arrange a collection date with our bulky refuse collection service by ringing 0611 702002. The bulky refuse collection service is free of charge for private households who can avail themselves of the service up to four times a year for a quantity of five cubic metres for each collection.



**Yes,**  
this is bulky refuse

- House and garden furniture, carpets and plastic floor coverings
- Bed frames and mattresses
- Prams, bulky toys, bicycles without tyres
- Kitchen stoves, ovens, washing and dishwasher machines, fridges and deep freezers
- Computers, printers, fax machines, HiFi systems, televisions, monitors, microwave ovens
- Branches and hedge trimmings (bundled)



**No,**  
this is not bulky refuse

- Waste from building renovation, such as building rubble, stone, mortar
- Windows (fire-protection) doors, garage doors, laminate and parquet flooring
- Showers, bathtubs, wash basins, toilet bowls
- Radiators, oil tanks
- Car wrecks, car parts and tyres, motorbikes
- Electronic equipment
- Plastic sacks with non-recyclable waste
- Paperboard



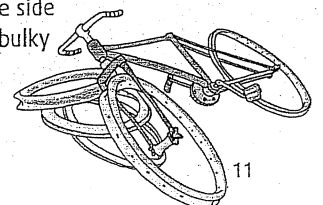
**Bulky Refuse Service 0611 702002**  
(We speak German.)

→ The waste listed under "No" cannot be collected free of charge by the bulky refuse collection service. If you have such waste, please contact the ELW bulky refuse service. The staff also have a solution for this type of waste and can inform you about the conditions in which they can dispose of this waste or can put you in touch with the right contact partner.

## Info

The date for the collection of bulky refuse is usually between the following five – ten working days. However, you can also arrange a date that takes into account longer term planning such as several weeks in advance.

Please put out the bulky refuse at the earliest on the evening before the arranged date and by 6 O'clock in the morning of the day of collection at the latest in a location that is clearly visible and easy to access at the side of the road. It must not constitute a hindrance to traffic. Should it not be possible to place the bulky refuse at the side of the road, please contact the staff at the bulky service collection service.



# Addresses and Opening Times at a Glance

## Civil Amenity Centres [Wertstoffhöfe]

- Wiesbaden-Nordenstadt, Borsigstraße
- Wiesbaden-Dotzheim, Willi-Werner-Straße 11
- Wiesbaden-Bierstadt, Kloppenheimer Straße 30

### Opening times:

Tuesdays to Fridays from 8.30 – 17.00  
and Saturdays from 8.30 – 16.00

## Disposal Site [Deponie]

Deponiestraße 15

- Small quantity acceptance point [Kleinannahmestelle] (including material centre)
- Special waste acceptance [Sonderabfallkleinannahme]

### Opening times:

Mondays to Fridays from 7 – 15.30  
and Saturdays from 8 – 13.00.

For more information on the material centre and the small quantity acceptance point, please consult the internet: [www.wiesbaden.de/elw](http://www.wiesbaden.de/elw) → Abfall.

## Depot with ELW Gate [Betriebshof]

Unterer Zwerchweg 120, 65205 Wiesbaden

The gate is occupied Mondays to Fridays from 7 – 20.00  
and Saturdays from 7 – 16.00.

## ELW Service Center

Telephone: 0611 319700

E-Mail: [elw@elw.de](mailto:elw@elw.de)

## ELW Bulky Refuse Collection Service

Telephone: 0611 702002

E-Mail: [sperrmuell@elw.de](mailto:sperrmuell@elw.de)

Service centre staff and the bulky refuse collection service can be contacted Mondays, Tuesdays and Thursdays from 7 to 17.00, Wednesdays from 7 to 18.00 and Fridays from 7 to 14.00.

Wedding-eve parties, bathroom renovation or garden maintenance

## The Mini-Container



ELW Container Service

Telephone: 0611 319821

E-Mail: [containerdienst@elw.de](mailto:containerdienst@elw.de)

We can provide containers from 1 to 36 m<sup>3</sup>.



**ELW**

Entsorgungsbetriebe der  
Landeshauptstadt Wiesbaden

# Waste Glossary

## A

Accumulators	10
Acids	10
Adhesive	10
Aluminium	10
Animal excrement	9
Answering machines	7
Ash	9
Audio cassettes	9

## B

Bags	8
Base solutions	10
Battery acid	10
Beaker (for yoghurts, etc.)	8
Bed frame	11
Bicycles	11
Bio waste	6
Blood pressure measuring devices	7
Bones	6
Books	5
Bottle caps	8
Branches	6
Brochures	5
Brush cleaner	10
Buckets	9
Bulky refuse	11

## C

Cameras	7
Car batteries	10
Car radios	7
Cardboard	5
Carpets	11
Carrier bags	8
Cat litter	9
Catalogues	5
Chemicals	10
Cigar ends	9
Cigarette ash	9
Cigarette ends	9
Clay pots	9
Cleaner	10
Clocks (electric)	7
Clothes driers	7
Coffee grounds	6
Coffee machine	7
Colours	10
Computer paper	5
Computer	7, 11
Copying paper	5
Crockery	9
Crystal glasses	9
Cut flowers	6

## D

Deep fat fryer	7
Deep freezers	7, 11
Dishwasher	7

Dishwashers	7, 11
Dispersion paints	10
Drills	7
Drinking glasses	4
Drinks cans	8
Drinks cartons	8
Dry bags	10

## E

Egg boilers	7
Egg shells	6
Electric stove	11
Electronic scrap	7
Energy-saving lamps	10
Exercise books	5

## F

Fans	7
Fax machines	7, 11
Feathers	6
Greases	10
File covers	9
Filler	10
Fluorescent tube	10
Foils	8
Food leftovers	6
Fridge	7, 11
Fruit scraps	6
Furniture	11

## G

Gameboys	7
Garden furniture	11
Garden waste	6
Glass	4
Grass trimmings	6

## H

Hair	6
Hair dryer	7
Halon fire extinguisher	10
Hedge trimmings (bundled)	6, 11
Hedge trimmings	6
HiFi systems	7, 11
Household equipment	9
Hydrochloric acid	10

## I

Insecticides	10
Iron	7
Jam jars	4

## K

Kitchen appliances	7
Kitchen stove	7, 11

## L

Large domestic appliances	7
Leaflets	5

# Waste Glossary

Leaves	6
Light bulbs	9
Lightweight packaging	8
Loppings	6
LVP	8

## M

Magazines	5
Mattresses	11
Meal leftovers	6
Mercury vapour discharge lamps	0
Mercury	10
Metal lids	8
Microwave ovens	7, 11
Milk cartons	8
Milling	7
Mixer	7
Mobile phone	7
Monitors	7, 11
MP3 players	7

## N

Nappies	9
Newspapers	5
Non-recyclable waste	9
Non-returnable bottles	4

## O

Oil filter	10
Oils	10
Oven	11

## P

Packaging of plastic, metal or compound materials	8
Paints	10
Paper (soiled)	9
Paper packaging	5
Paper	5
Paperboard	5
Photographic chemicals	10
Pickling jars	4
Plastic bottles	8
Plastic bucket	9
Plastic floor coverings	11
Pocket calculators	7
Polystyrene	8
Potted plants	6
Prams	11
Preservative jars	4
Preservatives	8
Printer	7, 11
Product packaging	8
Pulse reader	7
Pumps	7

## R

Radios	7
Razors	7
Refrigerators	7, 11

## S

Sanders	7
Sanitary towels	9
Sawdust	6
Sawing	7
Scrap glass	4
Sealant	10
Sewing machines	7
Small animal litter	9
Small capacitors	10
Solvent	10
Special waste	10
Spray cans (with residue)	10
Spray cans (empty)	8
Stain remover	10

## T

Tea bags	6
Telephones	7
Televisions	7, 11
Thermometer (electric)	7
Thermometer (with mercury)	10
Thinner	10
Toasters	7
Toothbrush (electric)	7
Toy (bulky)	11
Toy (electric)	7
Toy	9
Tree cuttings	6

## U V

Vacuum packaging	8
Vegetable scraps	6
Video cassettes	9
Video recorder	7

## W

Wallpaper (removed from wall)	9
Washing machines	7, 11
Waste paper	5
Water boilers	7
Waxes	10
Weed killer	10
Wood protectors	10
Wood shavings	6
Writing paper	5

## X Y Z

Yoghurt beaker	8
----------------	---

